

**SEMESTRAL ASSESSMENT 1 / 2016  
PRIMARY 3**

**SCIENCE**

**(BOOKLET A)**

Name : \_\_\_\_\_ (    )

Date : 10<sup>th</sup> May 2016

Class : P3 \_\_\_\_\_

Total Time for Booklet A & Booklet B : 1 hour

**INSTRUCTIONS TO CANDIDATES**

1. Write your name, index number and class in the space above.
2. Do not turn over this page until you are told to do so.
3. Follow all instructions carefully.
4. Answer all questions.
5. For Section A, shade your answers for questions 1 to 15 in the Optical Answer Sheet (OAS) provided.
6. For Section B, write your answers for questions 16 to 20 in the space provided in the booklet.
7. The total marks for Booklet A is 30 marks.

**Section A (30 marks)**

For each question 1 to 15, four options are given. One of them is the correct answer. Make your choice (1, 2, 3 or 4). Shade the oval (1, 2, 3 or 4) on the Optical Answer Sheet.

1. The table below shows a diversity of things you can find at a park.

<b>Things found at a park</b>	
<b>Living Things</b>	<b>Non-living Things</b>
Fishes	Bridges
Benches	Stones
Insects	Grass
Trees	Lamps

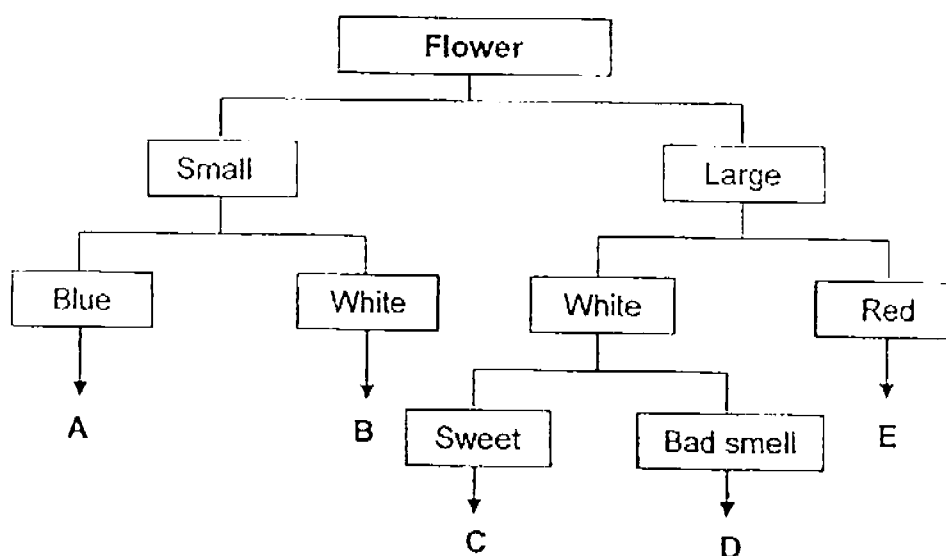
Which of the above items have been grouped wrongly?

- (1) Trees and lamps
- (2) Insects and stones
- (3) Fishes and bridges
- (4) Benches and grass

2. The table below shows the characteristics of some flowers which attract certain animals.

Animal	Characteristics of flowers		
	Size	Colour	Smell
beetle	large	white	bad smell
bee	small	bright blue	no smell
butterfly	small	white	no smell
bird	large	red	no smell
bat	large	white	sweet

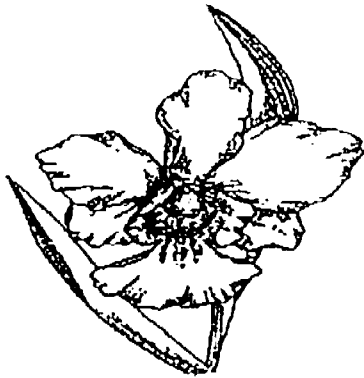
Study the classification diagram given below. A, B, C, D and E represent five different types of flowers.



Based on the classification diagram above, which animal would be attracted to Flower B and which animal would be attracted to Flower C?

	Flower B	Flower C
(1)	beetle	bird
(2)	butterfly	bat
(3)	bee	bat
(4)	butterfly	beetle

3. The diagram below shows an orchid plant and a fern plant.



Orchid



Fern

Which of the following statements is/are correct?

- A: Both the orchid plant and the fern plant are flowering plants.
- B: The fern plant has a stem but the orchid plant does not.
- C: The orchid plant is a flowering plant.
- D: The orchid plant can make food using sunlight but the fern cannot.

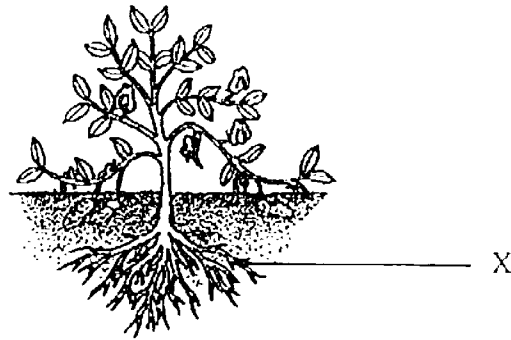
( 1 ) A only

( 2 ) C only

( 3 ) A and B

( 4 ) C and D

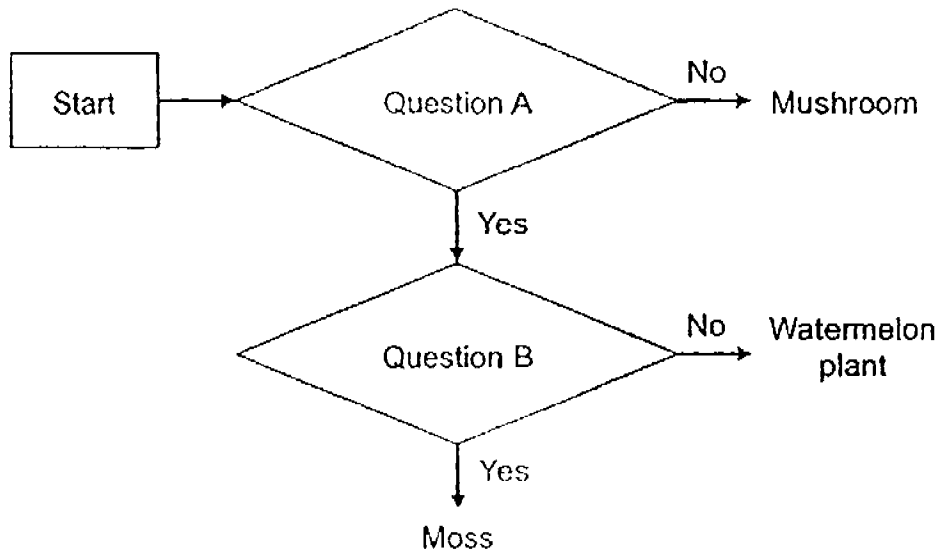
4. The picture below shows a plant.



What is the function of part X?

- (1) To attract insects.
  - (2) To make food for the plant.
  - (3) To absorb water and minerals for the plant.
  - (4) To transport water and minerals to the rest of the plant.
5. Lydia had a pet hamster. One day, she forgot to shut the door of her hamster's cage. When she reached home at the end of the day, she found her hamster under her bed. Which characteristic of living things does this show?
- (1) Living things can breathe.
  - (2) Living things can reproduce.
  - (3) Living things change as they grow.
  - (4) Living things can move by themselves.

6. Study the flowchart carefully.



Based on the flowchart above, what are Question A and Question B?

	Question A	Question B
( 1 )	Can it reproduce by seeds?	Does it live on land?
( 2 )	Does it live on land?	Can it make its own food?
( 3 )	Can it make its own food?	Can it reproduce by spores?
( 4 )	Can it reproduce by spores?	Can it bear flowers?

7. Which of the following statements about bacteria is correct?

- ( 1 ) All bacteria are harmful to our body.
- ( 2 ) All bacteria do not need food and water.
- ( 3 ) Some bacteria can be found in our body.
- ( 4 ) Bacteria can be seen with the naked eye.

8. Seed X was placed in the soil and its growth was monitored and recorded in the table shown below.

Date	Observations of Seed X
Day 1	Seed was put in the soil
Day 7	Roots appeared
Day 15	First shoot appeared
Day 20	Leaves appeared

Based on the information provided in the table above, by which day can Seed X survive without its seed leaves?

- ( 1 ) Day 1
- ( 2 ) Day 7
- ( 3 ) Day 15
- ( 4 ) Day 20

9. Study the characteristics of Animal K.

**Animal K**

**It has moist skin.**

**It eats other small insects.**

**It can live on land and in water.**

**It swims well.**

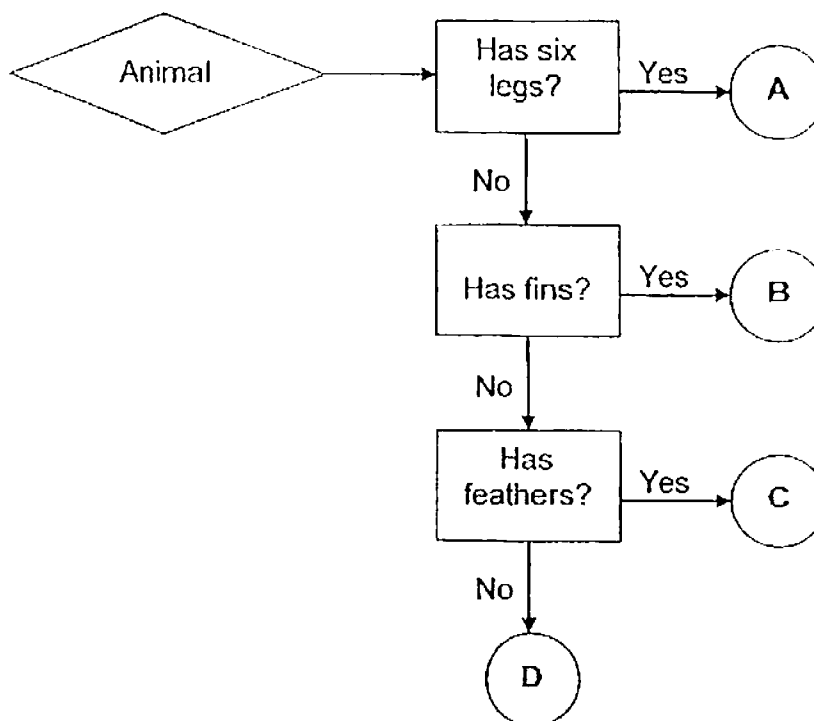
**It lays eggs.**

Animal K is most likely to be a/an \_\_\_\_\_.

- ( 1 ) fish
- ( 2 ) reptile
- ( 3 ) mammal
- ( 4 ) amphibian



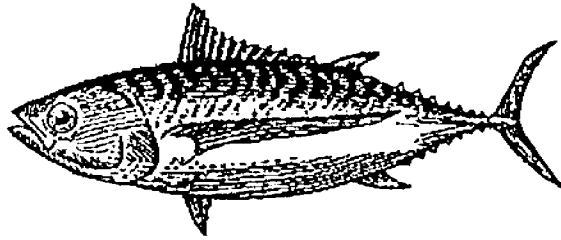
10. Study the animal below.



Which letter (A,B,C or D) in the flowchart above best represents the animal in the picture?

- ( 1 )     A
- ( 2 )     B
- ( 3 )     C
- ( 4 )     D

11. Study the diagram below.



Which of the following statement(s) is/ are true?

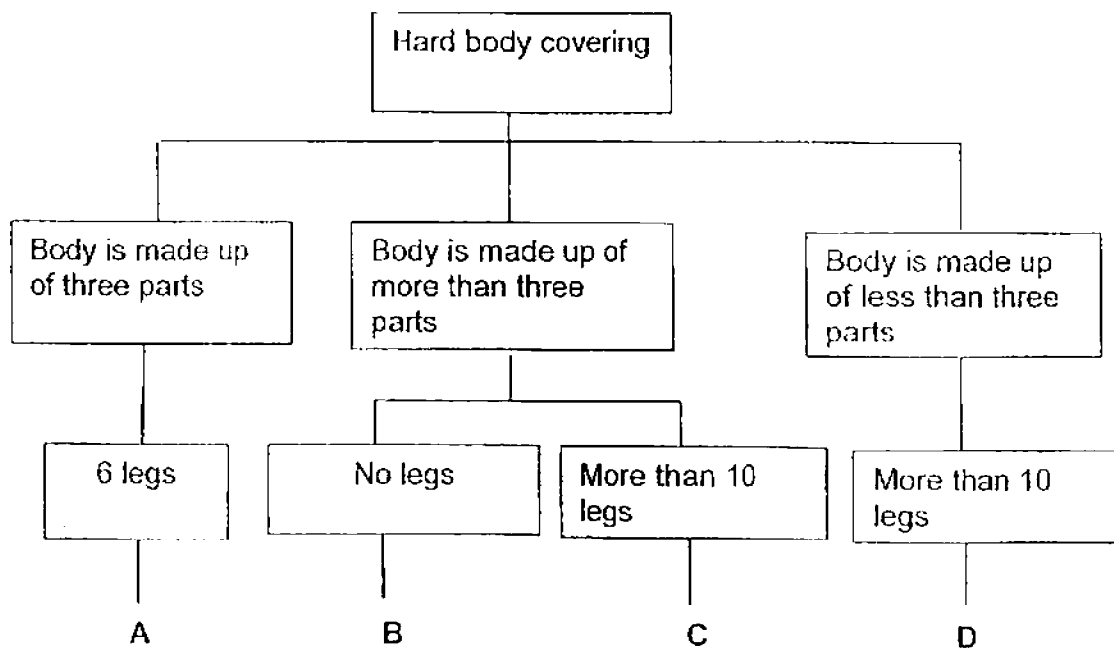
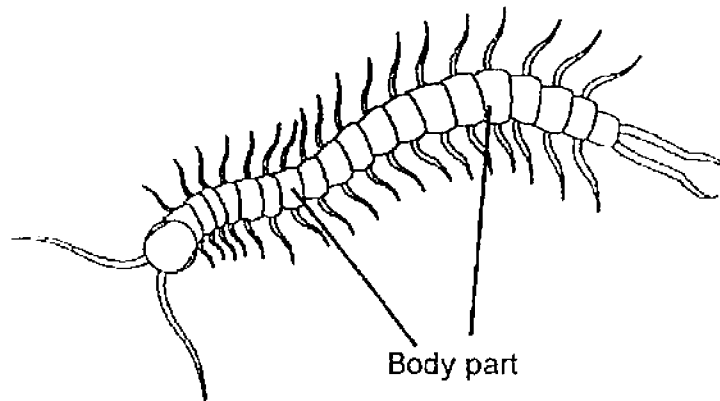
A: It has scales to protect its body.

B: It has gills to help it to lay eggs.

C: It has fins and a tail to help it move in water.

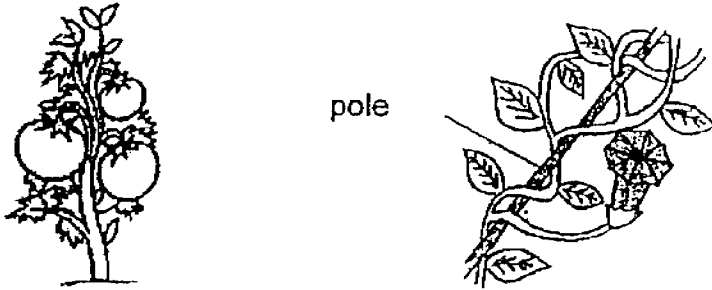
- (1) A only
- (2) B only
- (3) A and C only
- (4) A, B and C

12. Jack found an animal with a hard outer body covering as shown below.  
He wanted to classify the animal based on the classification chart below.  
Which group, A, B, C or D should Jack place this animal in?



- (1) A  
(2) B  
(3) C  
(4) D

13. Study the two plants shown below carefully.



Which of the following correctly describes the similarities between them?

- A Both are land plants.
  - B Both have weak stems.
  - C Both reproduce from seeds.
- 
- ( 1 ) A and B only
  - ( 2 ) A and C only
  - ( 3 ) B and C only
  - ( 4 ) All of the above

14. Ali wanted to investigate what should be the best temperature for seeds to germinate and prepared 4 set-ups similar to the one shown in the diagram below.



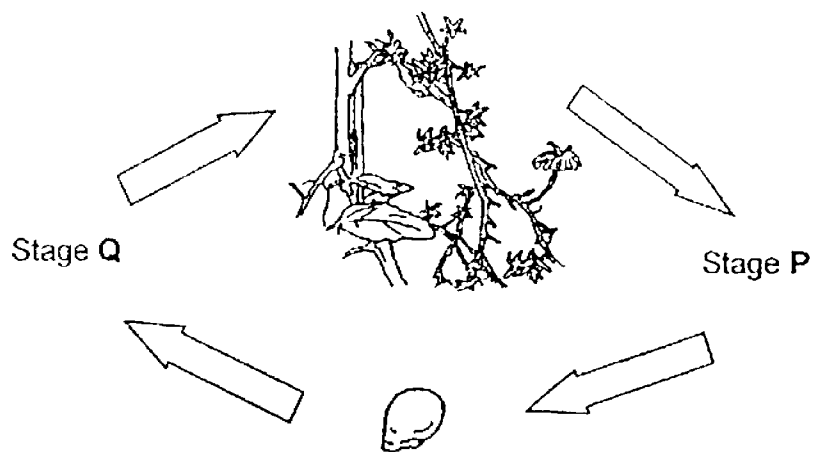
He placed each set-up at a different place as shown in the following table.

Set-up	Place	Temperature
A	In a classroom	25°C
B	In a refrigerator	3°C
C	In a warm room	29°C
D	In a heated oven	90°C

In which two set-ups, would the seeds grow into young plants?

- (1) A and B
- (2) A and C
- (3) B and C
- (4) B and D

15. The diagram shows the growth of a plant with missing stages, P and Q.



Which of the following shows the correct growth stages for P and Q?

	P	Q
(1)		
(2)		
(3)		
(4)		

~ End of Section A ~

**SEMESTRAL ASSESSMENT 1 / 2016**

**PRIMARY 3**

**SCIENCE**

**(BOOKLET B)**

Name : \_\_\_\_\_ (     )

Date : 10<sup>th</sup> May 2016

Class : P3 \_\_\_\_\_

Total Time for Booklet A & Booklet B : 1 hour

**INSTRUCTIONS TO CANDIDATES**

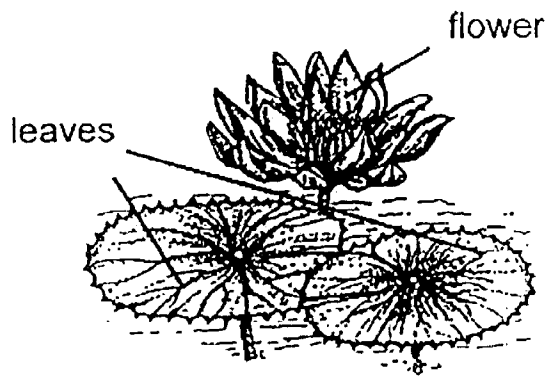
1. Write your name, index number and class in the space above.
2. Do not turn over this page until you are told to do so.
3. Follow all instructions carefully.
4. Answer all questions.
5. For Section A, shade your answers for questions 1 to 15 in the Optical Answer Sheet (OAS) provided.
6. For Section B, **write** your answers for questions 16 to 20 in the space provided in the booklet.
7. The total marks for Booklet B is 20 marks.

Booklet A		/30
Booklet B		/20
Total		/50
Parent's Signature		

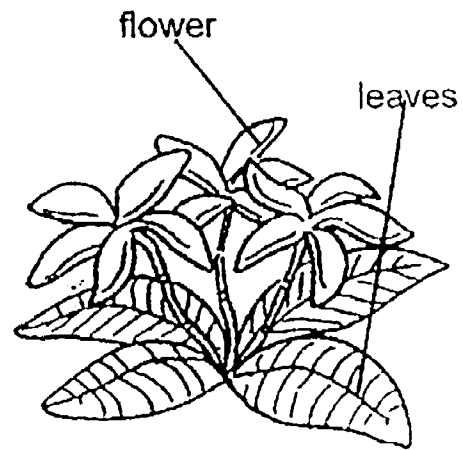
**Section B (20 marks)**

Write your answers to questions 16 to 20 in this booklet.

16. Study the 2 plants below.



Plant R



Plant S

- (a) Write down 2 differences between the leaves of Plant R and Plant S. [2]  
(Do not compare the size.)

Difference 1: \_\_\_\_\_

\_\_\_\_\_

Difference 2: \_\_\_\_\_

\_\_\_\_\_

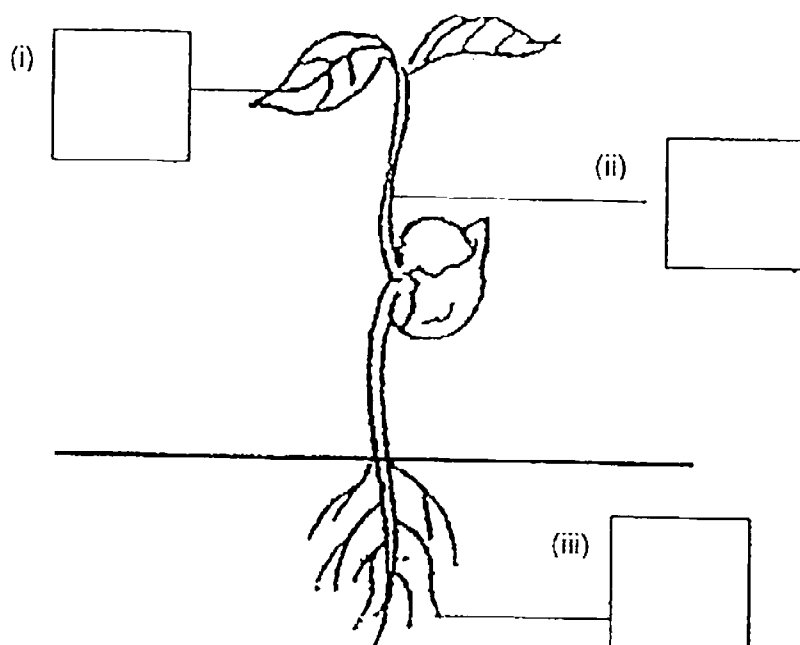
	2
--	---



(b) The table below shows a seedling and its function.

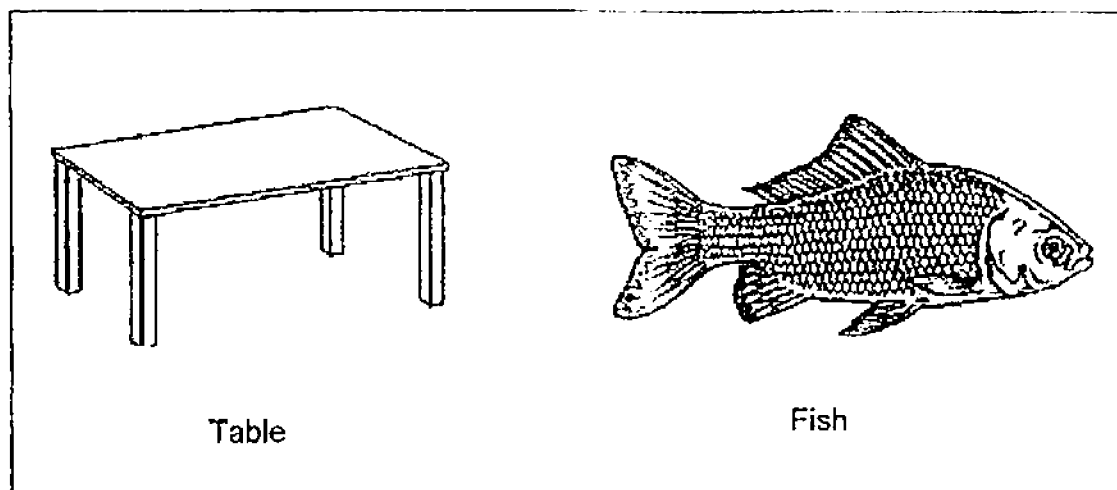
Function	Part of the seedling
Makes food for the plant.	A
Takes in water and mineral salts.	B
Transports water to the leaves.	C

Write A, B or C in the boxes provided below to show the correct function of the parts of the seedling. [2]



	2
--	---

17. Study the diagrams below.



(a) Tick (  $\checkmark$  ) the correct boxes to show the groups which the table and fish belong to [2]

	Living Thing	Non-living Thing
Table		
Fish		

(b) Based on the characteristics of living and non-living things, give two reasons to explain your answer. [2]

Reason 1 : \_\_\_\_\_

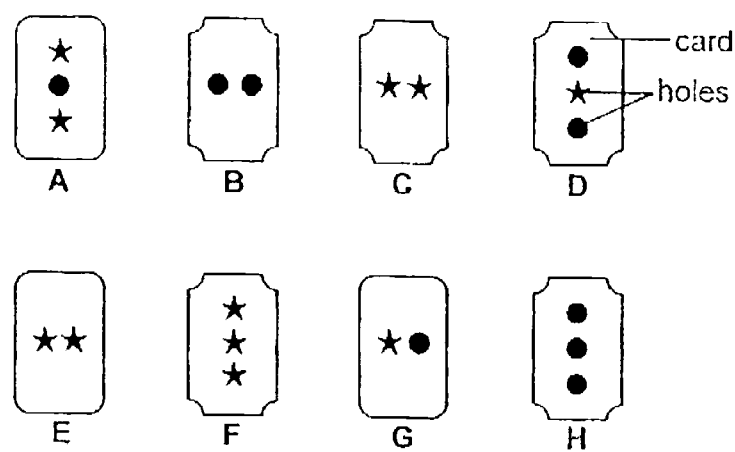
\_\_\_\_\_

Reason 2 : \_\_\_\_\_

\_\_\_\_\_

	4
--	---

18. Bryan found some game cards with holes as shown below.



(a) Classify the cards into two groups. Fill in the table below with the letters (A-H) according to the heading. [2]

Game Cards			
2 holes		3 holes	
Same shape	Different shape	Same shape	Different shape

	2
--	---

(b) Characteristics of things S, T, U and V were noted down in the table shown below.

Thing	Needs sunlight	Can move from place to place	Needs air, food and water
S		√	
T	√	√	√
U		√	√
V		√	

Based on the table above, read each of the statements below and write down 'True' or 'False' in the column provided. [2]

Statement	True or False
(a) V is a rabbit.	
(b) T and U are living things.	
(c) T is a mushroom.	
(d) S is a toy car.	

	2
--	---

19. Look at the diagram of the seedling below.



(a) Which part of the plant, X, Y or Z appears first? [1]

\_\_\_\_\_

(b) Besides air, what is needed for the seed to germinate? [1]

\_\_\_\_\_

A seedling was placed in a room with all the suitable conditions for it to develop into a young plant. The table below shows the change in the mass of the seed leaves.

Day	Day 1	Day 3	Day 5	Day 7	Day 9
Mass (g)	1 g	_____g	0.6 g	0.4 g	0.2 g

(c) What do you think will be the mass of the seed leaves on Day 3 be? [1]

\_\_\_\_\_

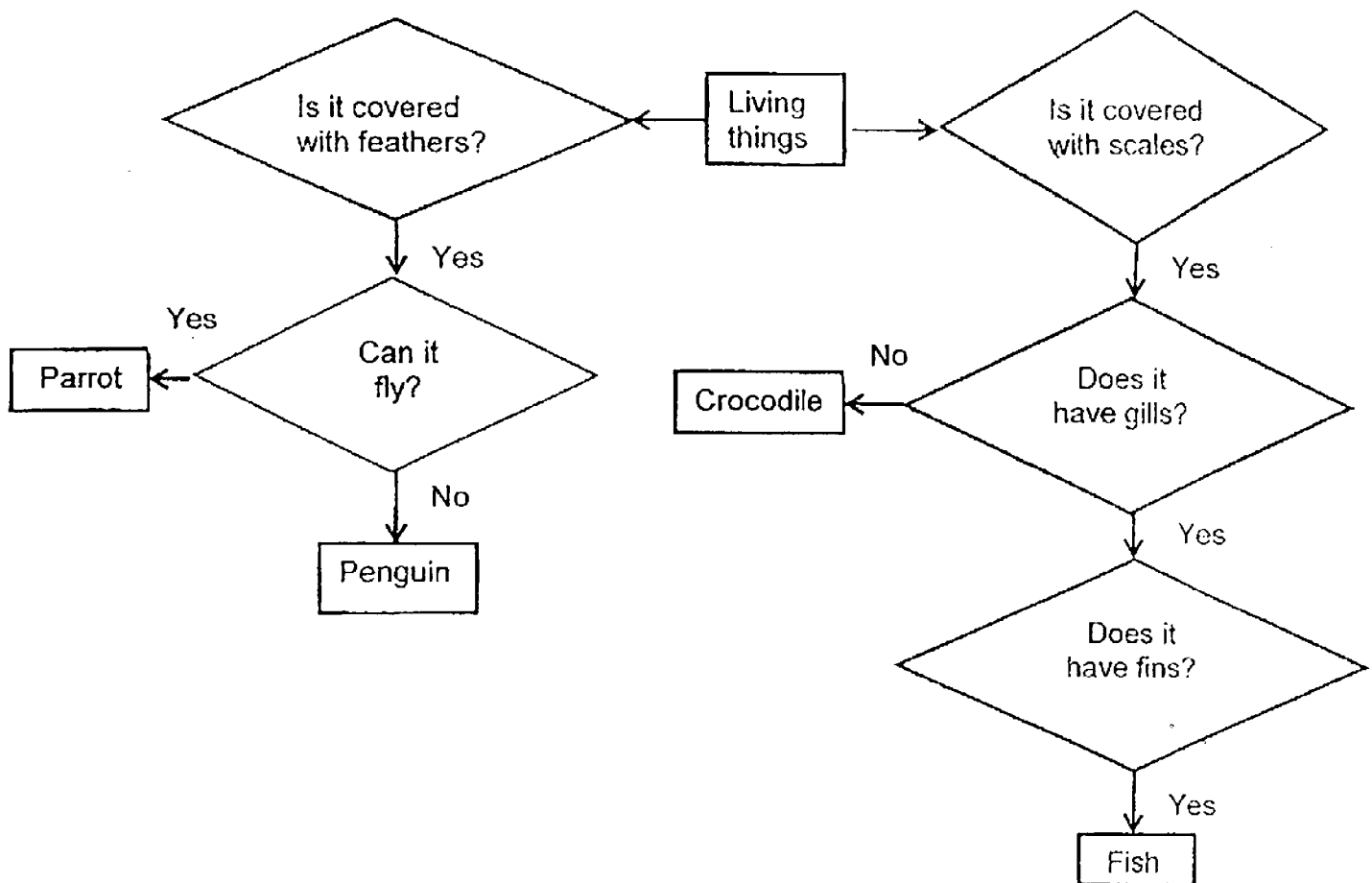
(d) From the table above, explain the change in the mass of the seed leaves. [1]

\_\_\_\_\_

\_\_\_\_\_

	4
--	---

20. Study the flowchart below.



(a) Based on the flowchart above, name the animal that belong to the following groups.[2]

	Common observable characteristics	Name of living things
(i)	It is covered with scales but it does not have gills.	
(ii)	It has wings but it cannot fly.	

(b) Based on the flowchart above, name a similarity between the fish and crocodile.[1]

---

(c) Based on the flowchart above, name a difference between the penguin and the parrot.[1]

---

~ End of Paper ~

EXAM PAPER 2016 (P3)

SCHOOL : RIVER VALLEY

SUBJECT : SCIENCE

TERM : SA1

Q1 4	Q2 2	Q3 2	Q4 3	Q5 4	Q6 3	Q7 3	Q8 4	Q9 4	Q10 3
Q11 3	Q12 3	Q13 2	Q14 2	Q15 1					

16)a)1)The leaves of plant R have jagged edges, but the leaves of plant S have entire edges.

2)Plant R has leaves that grow in water but plant S does not.

b)i)A    ii)C    iii)B

17)a)Table ----Non- living Thing

Fish ----- Living Thing

b)1)Living thing can grow but non-living things do not.

2)Living things reproduce but non-living things do not .

18)a)

C , B , E	G	H , F	A, D
-----------	---	-------	------

18)b)a)False      b)True      c)False      d)True

19)a)Part Z.

b)Water and warmth.

c)0.8g

d)As the seed leaves grows the seed leaves are used up to provide nutrients for the plant. Therefore, it will reduce in mass plant.

20)a)i)crocodile    ii)penguin

b)Both the fish and the crocodile have scales.

c)The penguin cannot fly but the parrot can fly.